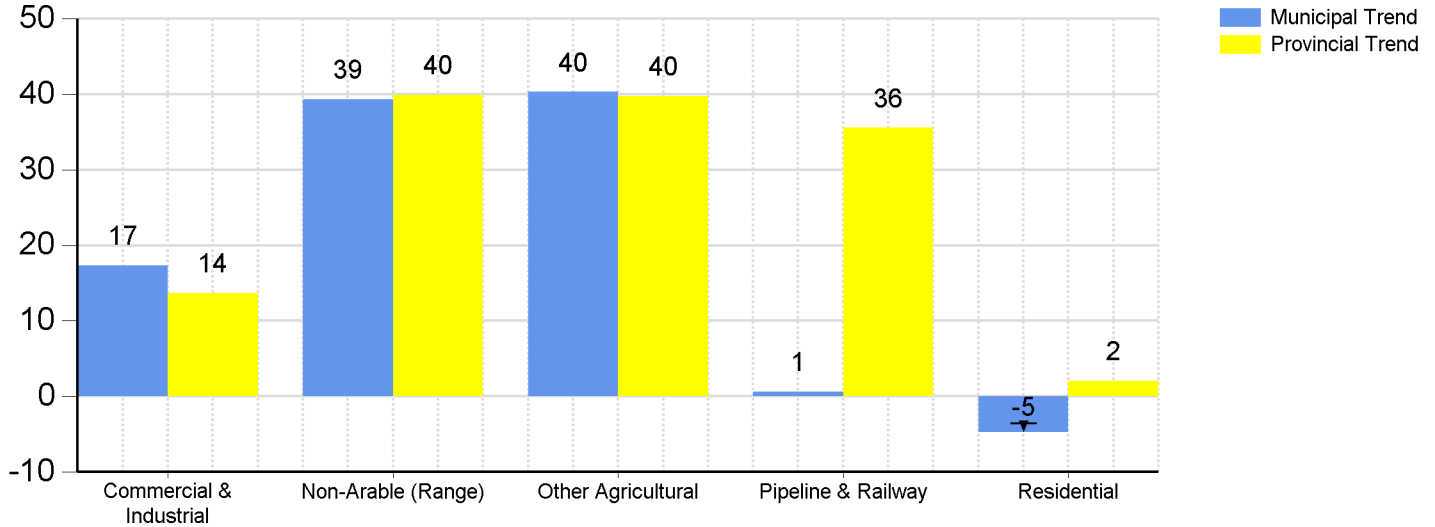


# 2025 Revaluation Assessed Value Trend Report (100% Value) for 469 - TURTLE RIVER (RM)

March 28, 2025

Tax Class (as defined in Regulations)

	2024 Municipal Assessed Value	2025 Municipal Assessed Value	Municipal Trend	Provincial Trend
<b>Commercial &amp; Industrial</b>	\$174,598,300	\$204,820,100	17%	14%
<b>Non-Arable (Range)</b>	\$40,007,100	\$55,746,900	39%	40%
<b>Other Agricultural</b>	\$100,911,700	\$141,568,500	40%	40%
<b>Pipeline &amp; Railway</b>	\$6,858,400	\$6,903,400	1%	36%
<b>Residential</b>	\$29,871,400	\$28,468,900	-5%	2%
<b>Total</b>	\$352,246,900	\$437,507,800	24%	23%



## 2025 Revaluation Assessed Value Trend Report (100% Value)

This report displays the 2024 Municipal Assessed Value, 2025 Municipal Assessed Value, and percentage increase by tax class and compares the Municipal Trends with the Provincial Trends. These trends are calculated using the 100% Assessed Values.

### 2024 Municipal Assessed Value

The sum of 100% assessed value for each tax class in the 2024 assessment roll year.  
The totals do not include application of percentages of value or exemptions and may or may not be confirmed.

### 2025 Municipal Assessed Value

The sum of 100% assessed value for each tax class in the 2025 assessment roll year.  
The totals do not include application of percentages of value or exemptions.  
The 2025 Assessed Values may include maintenance changes for the 2025 roll.

### Municipal Trend

The percentage change between the 2024 Municipal Assessed Value and the 2025 Municipal Assessed Value for each tax class.

### Provincial Trend

The average provincial change between 2024 100% assessed values and the 2025 100% assessed values by tax class.

The provincial trends are calculated from preliminary assessed values submitted by all assessment service providers.