

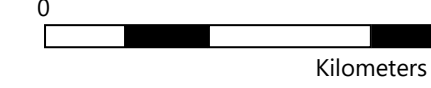
RURAL MUNICIPALITY OF TURTLE RIVER No. 469

WEST OF THE 3rd MERIDIAN

EDAM, SASKATCHEWAN
BOX 128, SOM 0V0
PHONE: 306-397-2311
FAX: 306-397-2346
EMAIL: rm469@sasktel.net

ADMINISTRATOR - REBECCA CARR
WEBSITE: www.rmofturtlever.com

Scale

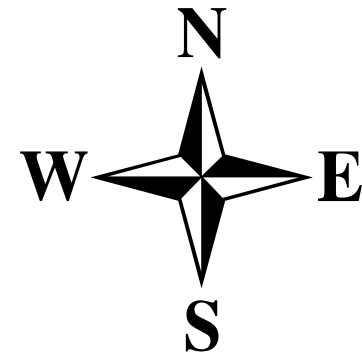


Legal Subdivision System

13	14	15	16
12	11	10	9
5	6	7	8
4	3	2	1

Township Section Numbers

31	32	33	34	35	36
30	29	28	27	26	25
19	20	21	22	23	24
18	17	16	15	14	13
7	8	9	10	11	12
6	5	4	3	2	1



Range 21

Range 20

Range 19

Township 49

Township 49

Range 21

Township 48

Township 48

VAWN

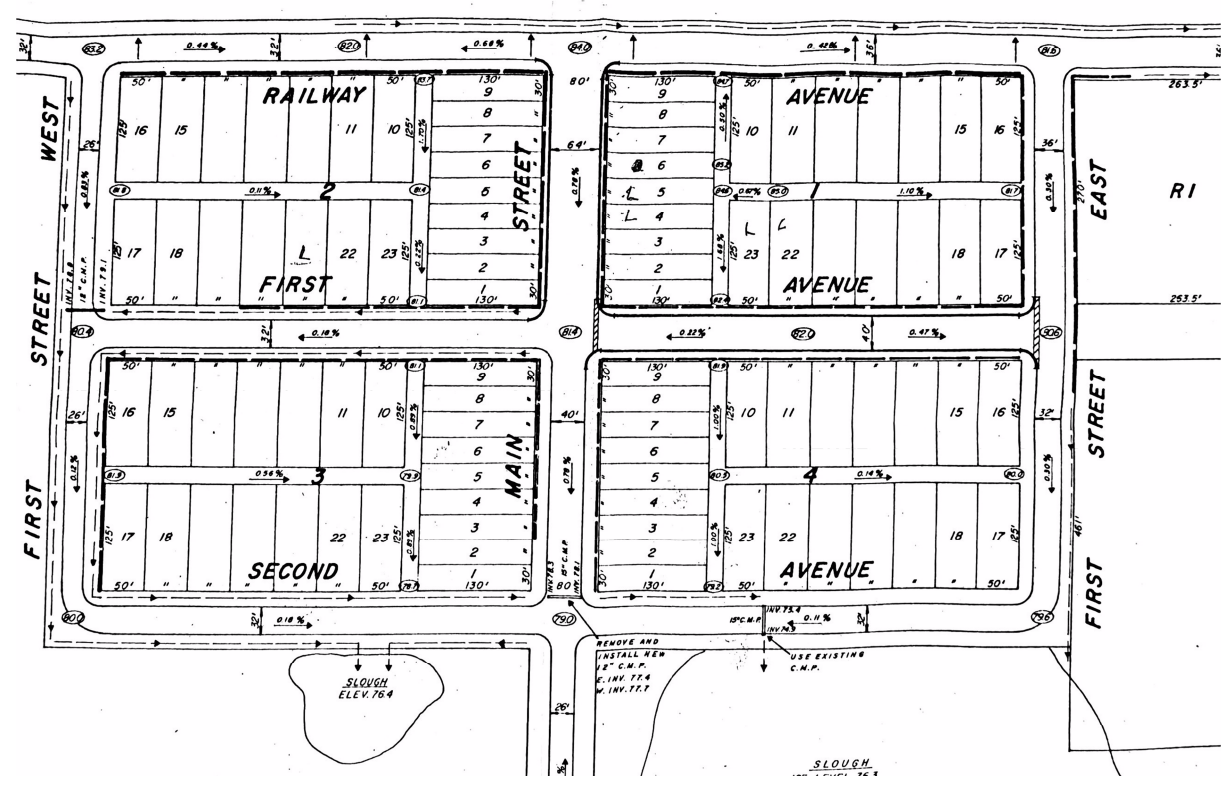
Township 47

Township 47

Range 20

Range 19

Township 46



Legend

- Residence
- Church
- Culvert
- Airplane
- Government Bridge
- Cemetery
- Golf Course
- Gravel Pit
- Community Hall
- School
- Waste Collection Site
- Well Site
- Highway
- Primary Grid
- Grid Gravel
- Main Farm Access
- Municipal Road
- Trail
- Urban Municipality
- Crown Land
- Canadian National Railway
- Watercourse
- Waterbody

Note: This map has been produced by Munisoft for the R.M. of Turtle River No. 469 using information supplied by others. Geospatial data and topographic data (Copyright Her Majesty the Queen in Right of Canada) have been provided by Information Services Corporation of Saskatchewan for the production of this map under license to the municipality. Duplication in whole or in part is prohibited. It is the responsibility of the user to verify the accuracy of the information since changes in assessment, ownership and other information may have changed since the time of printing. E&OE. Updated August 2022

